

Artwork by Regina Shimomura

## **CENTRAL UNION CHURCH**

September 29, 2024 † 11 AM Service

**THE NINETEENTH SUNDAY AFTER PENTECOST**

Parish Hall

Welcome to Central Union Church, where we believe that God dwells in you and in each person here today. When we see you, we see God's image, and we are honored and dignified by your presence. Thank you for coming.

**“We Engage and Embrace ALL as we seek to Embody Christ!”**

## THE COMMUNITY GATHERS...

*From many places we gather here. This is a high point of our week. We see our friends. We make new friends. And we spend time with the loving Christ who meets us where we are, as we are. In this Sanctuary we worship and through worship the courage within us is kindled to inspire courageous living beyond this place.*

**Gathering Music**

*As We Gather/ The Steadfast Love*

Worship Team

**Welcome and Announcements**

Pastor Rushan Sinnaduray

**\* Sharing Aloha**

**Call to Worship** (*responsively*)

One: We walk this day with God, who walks with us,

**Many: gathering us into a community to pray for one another in all things.**

One: We walk this day with Christ, who walks with us,

**Many: calling us to follow, helping us to set aside all which holds us back.**

One: We walk this day with the Holy Spirit, who walks with us,

**Many: sending us to share God's love with the world. Amen.**

**\* Music**

*I Will Call Upon the Lord*

Worship Team

**I will call upon the Lord**

**Who is worthy to be praised**

**So shall I be saved from my enemies**

*Chorus*

**The Lord liveth**

**And blessed be my Rock**

**And may the God of my salvation be exalted** (*Repeat*)

CCLI Song # 11263 CCLI License # 3179231

Michael O'Shields © 1981 MCA Music Publ., A.D.O. Universal Studio (Admin. by Universal Music Publishing Group)

Sound III, Inc. (Admin. by Universal Music Publishing Group)

**\* Music**

*O Lord Hear My Prayer*

Worship Team

**O Lord hear my prayer, Oh Lord hear my prayer**

**When I call answer me**

**Oh Lord hear my prayer, O lord hear my prayer**

**Come and listen to me.**

Words: Taizé Community. Music: Jacques Berthier. Copyright © 1982 Les Presses de Taizé, GIA Publications, Inc.

Permission to reprint obtained from ONE LICENSE with license #A-728809. All rights reserved.

**Time for Keiki**

Pastor Mary Herbig

## Prayer

### TO HEAR GOD'S WORD...

**Scripture**

James 5:13-20

Jay Jurick

**Sermon**

THE POWER OF PRAYER

Pastor Rushan

**\* Music**

*What A Friend We Have In Jesus*

Worship Team

**What a friend we have in Jesus  
All our sins and griefs to bear  
What a privilege to carry  
Everything to God in prayer**

**O what peace we often forfeit  
O what needless pain we bear  
All because we do not carry  
Everything to God in prayer**

**Have we trials and temptations?  
Is there trouble anywhere?  
We should never be discouraged  
Take it to the Lord in prayer**

**Can we find a friend so faithful  
Who will all our sorrows share?  
Jesus knows our every weakness  
Take it to the Lord in prayer**

Songwriters: Charles Converse / Joseph Scriven

lyrics © Edeejay Music, Word Music, Llc, Curb Word Music, Emerald Music (ireland) Ltd

### TO RESPOND IN FAITH...

**Time of Reflection**

**Prayers for Ourselves and Others**

**Lord's Prayer** (*in unison*)

**Our Father, who art in heaven, hallowed be Thy name. Thy kingdom come, Thy will be done, on earth as it is in heaven. Give us this day our daily bread, and forgive us our debts as we forgive our debtors. And lead us not into temptation, but deliver us from evil. For thine is the kingdom and the power and the glory forever. Amen.**

*Sung response: Lord, listen to your children praying.*

**Invitation to Offering**

Martha Balkin

**Offering**

*Down to the River to Pray*

Worship Team

**Prayer**

Martha Balkin

**AND GO FORTH IN LOVE.**

*God's love cannot be contained within the walls of this Sanctuary.*

*Take the love of Christ from this place into your homes, neighborhoods, and communities.*

**\* Music**

*We Are People on a Journey*

Worship Team

**We are people on a journey, pain is with us all the way.  
Joyfully we come together at the holy feast of God.**

**God has sent the invitation to the humble and the poor.  
Joyfully we come together at the holy feast of God.**

**This is bread that God provides us, nourishing our unity.  
Joyfully we come together at the holy feast of God.**

**Christ is ever present with us to unite us all in love.  
Joyfully we come together at the holy feast of God.**

**All who truly thirst for justice, seek their liberation here.  
Joyfully we come together at the holy feast of God.  
Joyfully we come together at the holy feast of God.**

English translation by Carolyn Jennings. Copyright © 1993 The Pilgrim Press. From *The New Century Hymnal*, Copyright © 1995 The Pilgrim Press. Permission is granted for this one-time use.

**\* Benediction**

Pastor Rushan

**\* Congregational Response**

Worship Team

**Christ beside us, Christ before us, Christ behind us—king of our hearts;  
Christ within us, Christ below us, Christ above us—never to part.**

Music: from Revised Church Hymnary 1927 by permission of Oxford University Press, London. CCLI License #3179231.

**Our WORSHIP is ended...our SERVICE now begins.**

\*Please rise in body and/or spirit.

*The flowers this morning were lovingly arranged by Gail Atwater, with assistance from Jodee Farm, and are provided by the Frances Kay Brossy Memorial Flower Fund in memory of Frances Kay Brossy, a faithful and active member of Central Union Church who loved life and loved flowers.*

## GIVE ALOHA DURING SEPTEMBER AT FOODLAND!



**ONE MORE DAY to Give Aloha** at any Foodland cash register with your Maika'i card (free at any Foodland service counter) to make a donation with cash, check, or credit card, naming **Central Union Church #78511** or **Central Union Preschool #78270** as a recipient. You can donate any amount, up to a total of \$249 (per person, per organization). You can submit your receipt (which will list your Maika'i number, our organization's name, and the donation amount) to the church office by mail, or in the collection plate, to get credit on your giving statement. PLEASE consider paying your September pledge, or give an extra donation, through *Give Aloha* this September!

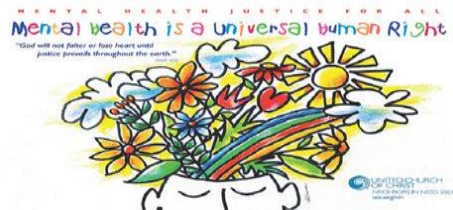
## PET BLESSING AND 10 AM POTLUCK - OCTOBER 6<sup>TH</sup>



Come and celebrate a blessing of pets on **Sunday, October 6<sup>th</sup>**, at all the in-person worship services (and online, the following Sunday). Bring your pet (or a photo) or stuffed animal to church and receive a blessing! Then, **following the 9 AM service**, bring a pet treat and a dish to share and enjoy a **POTLUCK** around the Women's Building! Pets are welcome all day!

## OCTOBER 6<sup>TH</sup> IS ALSO THE NEIGHBORS IN NEED (NIN) OFFERING

NIN is a special mission offering of the United Church of Christ that supports ministries of justice and compassion in the United States. Consider giving to the NIN fund! Checks can be made payable to Central Union Church with "NIN" in the memo line.



## JAZZ VESPERS: SUNDAY, OCTOBER 6<sup>TH</sup>



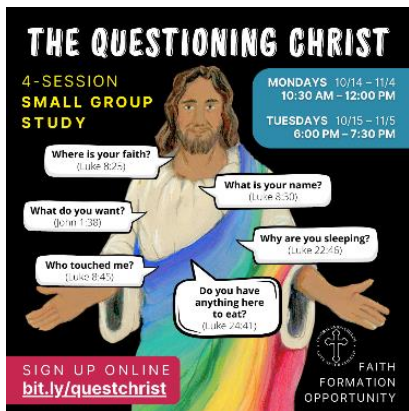
Join us in the Atherton Memorial Chapel from **5:30 to 6:30 PM** on the **first Sunday of the month**. (November 3, December 1)

## SAY IT WITH FLOWERS

If you would like to commemorate a birthday, anniversary or other occasion with flowers at a Sunday worship service, please contact Dona Hanaïke, through Natasha at 440-3004 (flowers@centralunionchurch.org), or visit Dona on Sunday mornings before or after the 9 AM service.



## 2024 AUTUMN STUDY: “THE QUESTIONING CHRIST”



Contrary to our assumptions, Jesus isn't the ultimate “Answer Man” but more like the Great Questioner. In fact, for every question Jesus answers in the Gospels, he asks nearly one hundred! Asking questions was central to Jesus' teachings and faith. Join Pastor Mary for a **morning** or **evening study in the Rewick Boardroom** as we explore some of the questions Jesus asked and discover how our questions and curiosity draw us closer to God.

The **Monday Morning Study** meets from **10:30 AM to 12:00 PM** on **October 14, 21, 28, & November 4.**

The **Tuesday Evening Study** meets from **6:00 to 7:30 PM** on **October 15, 22, 29, & November 5.**

## SERVICE OF HEALING & PRAYER: OCTOBER 20<sup>TH</sup>

Join us from **5:30 to 6:30 PM** in the **Atherton Memorial Chapel** on the **third Sunday of the month.** (November 17)



## LEARNING TREE:

**Sunday, October 13, 10 AM:** Join Matthew Bernstein for a Learning Tree presentation on “**An Introduction to Meditation**” in Room 201/202 in the Family Life Building. All are welcome.

**Sunday, October 27, 10 AM:** Join Pastor Rushan Sinnaduray for a Learning Tree presentation, “**Vision 2035 – Discerning our Calling**” in the **Women's Building.** All are welcome.



## READERS NEEDED FOR WORSHIP!

If you are interested in reading in a worship service, please join our pool of readers! We are always in need. To learn more and/or to sign up, use this QR code or type this link into your browser: [bit.ly/read4cuc](http://bit.ly/read4cuc).



CENTRAL UNION CHURCH  
**WOMEN'S RETREAT**  
 35TH ANNIVERSARY  
**T-SHIRT!**



Using original design from the first Women's Retreat in 1989!




**bit.ly/wr35shirt**  
 ORDER & PAY by  
**Friday 10/11/24**

**WOMEN'S RETREAT T-SHIRTS**

This year marks the 35th anniversary of the CUC Women's Retreat. To commemorate the occasion, special shirts will be printed using the original design from the first Women's Retreat in 1989! Whether you're a woman or not, attending this year's Women's Retreat or not, you're invited to purchase a shirt. Orders and payments must be received by **Friday, October 11**. To order and pay online, go to [bit.ly/wr35shirt](https://bit.ly/wr35shirt).

**CUC Women's Retreat  
 35th Anniversary T-shirts**

To order shirts, please indicate the desired quantity in the provided chart.

Submit this order form with cash/check payment in the offering plate, to the Church Office, or to a Women's Retreat representative.

Checks payable to: **Central Union Church**  
 Memo line: [quantity] **WR shirts**

**Select your payment option:**  
 CASH       CHECK

Order & payment must be received by:  
[Friday, October 11, 2024, 4:00 p.m.](#)

	PINK	PURPLE	BLUE	TOTAL
	QTY.	QTY.	QTY.	QTY.
<b>S</b>				
<b>M</b>				
<b>L</b>				
<b>XL</b>				
<b>2XL</b>				
<b>3XL</b>				
<b>Youth L</b>				
<b>Youth XL</b>				
<b>TOTAL</b>			<b>\$16 x</b>	

Name: \_\_\_\_\_ Date: \_\_\_\_\_ TOTAL \$ \_\_\_\_\_

Phone: \_\_\_\_\_ Email: \_\_\_\_\_

# WELCOME TO WORSHIP AT CENTRAL UNION CHURCH



Thank you for joining us in worship today. Your presence and participation are an important part of shaping this experience of worship for all of us. **Know that whoever you are and wherever you are in your journey of life and of faith, you are welcome here!**

If you are a guest here today, we would love for you to become a regular part of what God is doing in and through this church community. If you have any questions about joining us in ministry, please speak to one of the Ministers or contact the Church Office.

**Nursery:** A staffed Nursery is available during the **9 AM and 11 AM services**. Children, ages Birth through three years, may be left in the nursery where they will be cared for during the service.

**Sunday School:** We offer a Sunday School program for children, age 3 through 5<sup>th</sup> Grade, during the **9 AM and 11 AM services**. Children participate in the first part of the service and will leave for Sunday School following the Time for Keiki.

**Youth Group:** We offer a Youth Group for young people in grades 6 through 12 during the **11 AM service**. Youth participate in the first part of the service and leave for Youth Group following the Time for Keiki.

## OUR MINISTERS:

The Rev. A. Rushan Sinnaduray, Senior Minister  
The Rev. Mary Herbig, Associate Minister

*Please note: By attending events on campus, you may be included in photos and videos recorded by church representatives. Your presence grants your permission to be in these photos or videos, which may be used for communications or archival purposes.*

*If you do not wish to be photographed or included in communications, you may let a church representative know. Mahalo!*

Central Union Church – A United Church of Christ 'Ohana

*Celebrating transforming lives since 1887!*

**“We Engage and Embrace ALL as we seek to Embody Christ!”**

1660 South Beretania Street – Honolulu, Hawai'i 96826 • 808-941-0957

38 Kāne'ōhe Bay Drive – Kailua, Hawai'i 96734 • 808-254-3802

cuc@centralunionchurch.org • [centralunionchurch.org](http://centralunionchurch.org)

Sign up to receive the

**CU Weekly** by email:

*E-blast of news &*

*announcements sent*

*each Thursday*

*[bit.ly/getcuweekly](http://bit.ly/getcuweekly)*

